

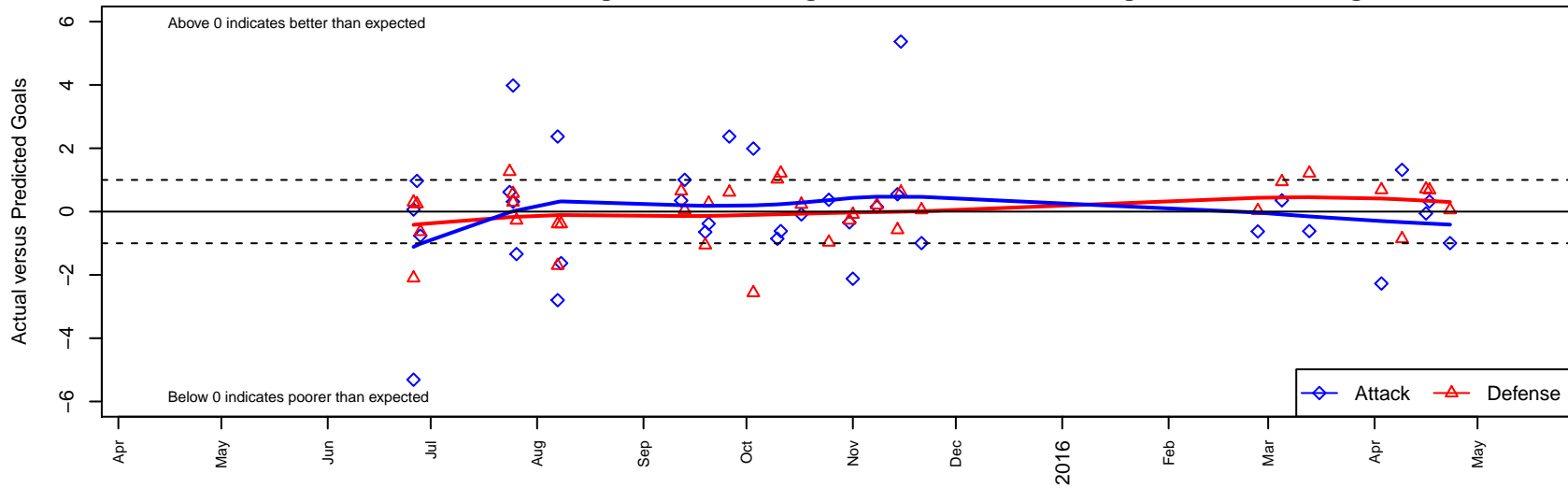
# Capital FC Timbers Black G01

Cascade Futbol Club/Capital FC  
 Salem, OR  
 G01 total strength=1139  
 attack=2.83 defense=3.71  
 fall league = PTT G01 Div 1 Red  
 spr league = Spr OYS G01 Div 1 Red

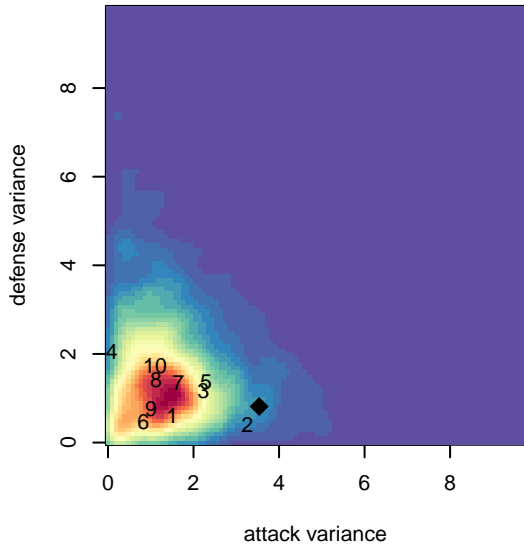
alt names used:

Venues played:  
 2015 Capital Cup GU14  
 2015 Oswego Nike Cup Silver U14  
 2015 Chinook Cup U14  
 2015 PTT G01 Division 1 Red  
 2015 OYS Presidents Cup G01  
 2015 Spr OYS G01 Division 1 Red

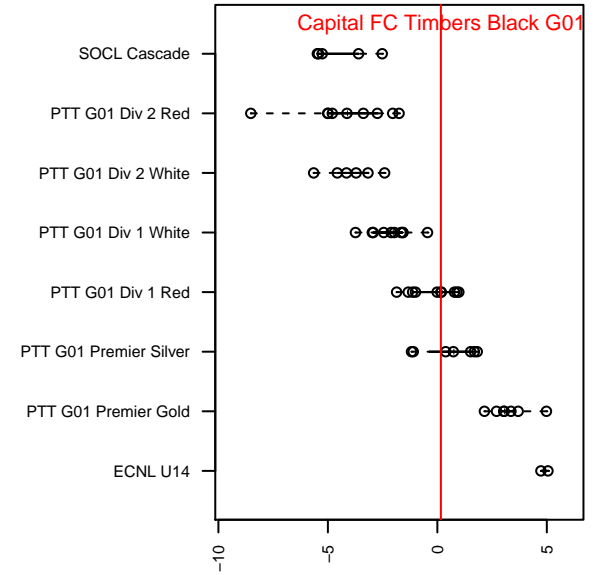
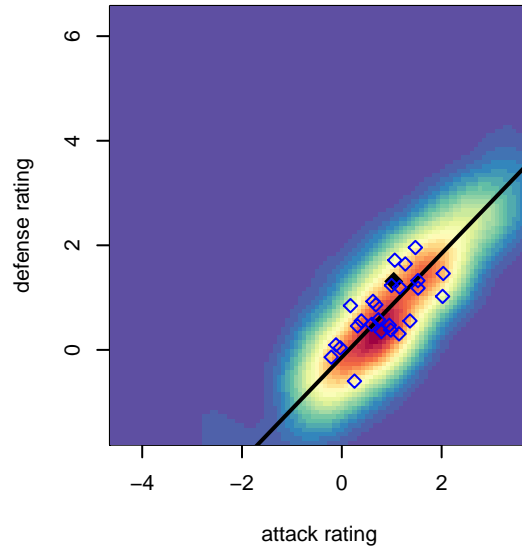
**Capital FC Timbers Black G01**  
 Dots are actual minus expected GF (blue circles) and GA (red triangles).  
 Blue line is smoothed change in attack strength. Red is smoothed change in defense strength.



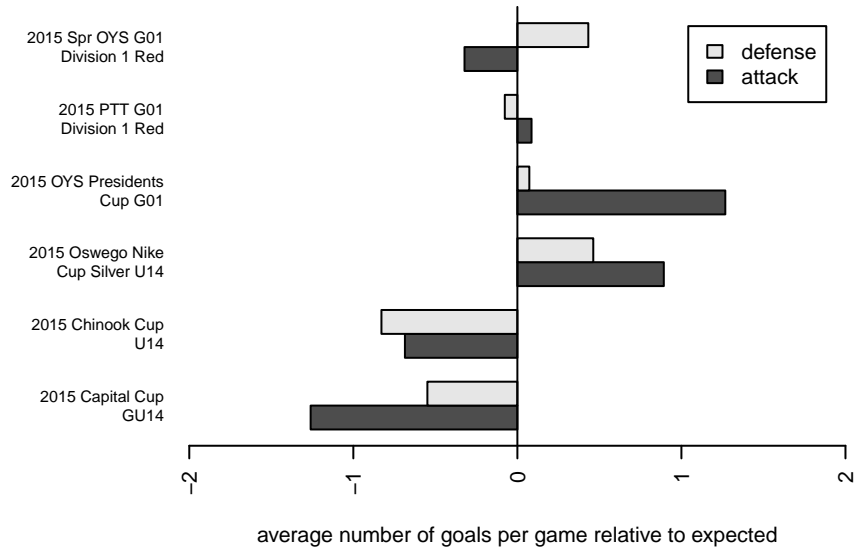
**attack and defense variance (black dot)  
relative to other teams  
and top 10 in region**



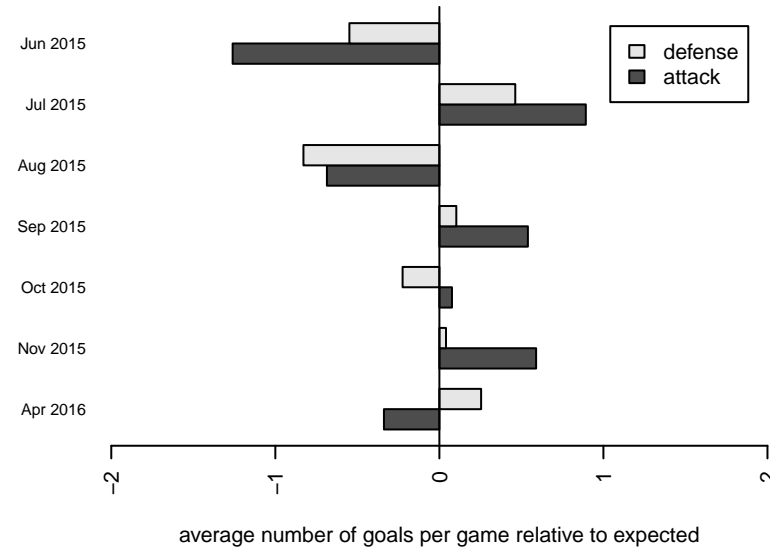
**attack and defense rating  
relative to others at age  
and all opponents in last 13 months**



**Performance relative to 13 month average**



**Performance relative to 13 month average**



| date       | home                              |   | away                               |   | venue                           | pred.home | pred.away |
|------------|-----------------------------------|---|------------------------------------|---|---------------------------------|-----------|-----------|
| 2016-04-23 | BSC Portland Black-Legends G01    | 1 | Capital FC Timbers Black G01       | 0 | 2015 Spr OYS G01 Division 1 Red | 1.05      | 1.00      |
| 2016-04-17 | Capital FC Timbers Black G01      | 2 | ETFC Cypress Red G01               | 0 | 2015 Spr OYS G01 Division 1 Red | 1.68      | 0.68      |
| 2016-04-16 | Washington Timbers Forest G01     | 0 | Capital FC Timbers Black G01       | 1 | 2015 Spr OYS G01 Division 1 Red | 0.71      | 1.06      |
| 2016-04-09 | Capital FC Timbers Black G01      | 3 | Canby United Volts G01             | 2 | 2015 Spr OYS G01 Division 1 Red | 1.68      | 1.14      |
| 2016-04-03 | HSC Galaxy G01                    | 0 | Capital FC Timbers Black G01       | 0 | 2015 Spr OYS G01 Division 1 Red | 0.69      | 2.27      |
| 2016-03-13 | Capital FC Timbers Black G01      | 0 | PCU Red G01                        | 0 | 2015 Spr OYS G01 Division 1 Red | 0.62      | 1.21      |
| 2016-03-05 | FC Salmon Creek Nemesis White G01 | 0 | Capital FC Timbers Black G01       | 2 | 2015 Spr OYS G01 Division 1 Red | 0.94      | 1.65      |
| 2016-02-27 | Capital FC Timbers Black G01      | 0 | Crossfire OR WUSC Levante Navy G01 | 1 | 2015 Spr OYS G01 Division 1 Red | 0.63      | 1.03      |
| 2015-11-21 | BSC Portland Black-Legends G01    | 1 | Capital FC Timbers Black G01       | 0 | 2015 OYS Presidents Cup G01     | 1.05      | 1.00      |
| 2015-11-15 | Capital FC Timbers Black G01      | 7 | FC Portland White G01              | 0 | 2015 OYS Presidents Cup G01     | 1.63      | 0.61      |
| 2015-11-14 | Westside Timbers Copa TS G01      | 1 | Capital FC Timbers Black G01       | 2 | 2015 OYS Presidents Cup G01     | 0.42      | 1.45      |
| 2015-11-08 | Capital FC Timbers Black G01      | 3 | BSC Portland Gold-Tiempo G01       | 0 | 2015 OYS Presidents Cup G01     | 2.85      | 0.20      |
| 2015-11-01 | PCU SESC Dynamite G01             | 1 | Capital FC Timbers Black G01       | 0 | 2015 PTT G01 Division 1 Red     | 0.91      | 2.12      |
| 2015-10-31 | Capital FC Timbers Black G01      | 1 | Crossfire OR SSC Storm G01         | 1 | 2015 PTT G01 Division 1 Red     | 1.34      | 0.73      |
| 2015-10-25 | Capital FC Timbers Black G01      | 1 | Crossfire OR WUSC Levante Navy G01 | 2 | 2015 PTT G01 Division 1 Red     | 0.63      | 1.03      |
| 2015-10-17 | Pacific FC White Ice G01          | 2 | Capital FC Timbers Black G01       | 1 | 2015 PTT G01 Division 1 Red     | 2.23      | 1.09      |
| 2015-10-11 | PCU Red G01                       | 0 | Capital FC Timbers Black G01       | 0 | 2015 PTT G01 Division 1 Red     | 1.21      | 0.62      |
| 2015-10-10 | Westside Timbers Copa G01         | 0 | Capital FC Timbers Black G01       | 0 | 2015 PTT G01 Division 1 Red     | 1.02      | 0.86      |
| 2015-10-03 | Capital FC Timbers Black G01      | 3 | NEU Barcelona White G01            | 4 | 2015 PTT G01 Division 1 Red     | 1.01      | 1.44      |
| 2015-09-26 | Capital FC Timbers Black G01      | 4 | FC Portland White G01              | 0 | 2015 PTT G01 Division 1 Red     | 1.63      | 0.61      |
| 2015-09-20 | Capital FC Timbers Black G01      | 0 | Washington Timbers Green G01       | 1 | 2015 PTT G01 Division 1 Red     | 0.38      | 1.26      |
| 2015-09-19 | Capital FC Timbers Black G01      | 1 | FC Salmon Creek Nemesis White G01  | 2 | 2015 PTT G01 Division 1 Red     | 1.65      | 0.94      |
| 2015-09-13 | BSC Portland Black-Legends G01    | 1 | Capital FC Timbers Black G01       | 2 | 2015 PTT G01 Division 1 Red     | 1.05      | 1.00      |
| 2015-09-12 | Thelo Threat G01                  | 0 | Capital FC Timbers Black G01       | 2 | 2015 PTT G01 Division 1 Red     | 0.65      | 1.65      |
| 2015-08-08 | Capital FC Timbers Black G01      | 0 | FC Portland White G01              | 1 | 2015 Chinook Cup U14            | 1.63      | 0.61      |
| 2015-08-07 | Capital FC Timbers Black G01      | 4 | FC Portland White G01              | 1 | 2015 Chinook Cup U14            | 1.63      | 0.61      |
| 2015-08-07 | PCU Black 2 G01                   | 2 | Capital FC Timbers Black G01       | 0 | 2015 Chinook Cup U14            | 0.30      | 2.80      |
| 2015-07-26 | Capital FC Timbers Black G01      | 0 | Crossfire OR SSC Storm G01         | 1 | 2015 Oswego Nike Cup Silver U14 | 1.34      | 0.73      |

| <b>date</b> | <b>home</b>                  |   | <b>away</b>                      |   | <b>venue</b>                    | <b>pred.home</b> | <b>pred.away</b> |
|-------------|------------------------------|---|----------------------------------|---|---------------------------------|------------------|------------------|
| 2015-07-25  | Capital FC Timbers Black G01 | 3 | FC Salmon Creek Nemesis Blue G01 | 0 | 2015 Oswego Nike Cup Silver U14 | 2.69             | 0.29             |
| 2015-07-25  | Capital FC Timbers Black G01 | 6 | THUSC Lithium G01                | 0 | 2015 Oswego Nike Cup Silver U14 | 2.02             | 0.57             |
| 2015-07-24  | Capital FC Timbers Black G01 | 1 | Washington Timbers Green G01     | 0 | 2015 Oswego Nike Cup Silver U14 | 0.38             | 1.26             |
| 2015-06-28  | Capital FC Timbers Black G01 | 0 | CSC Storm G01                    | 3 | 2015 Capital Cup GU14           | 0.76             | 2.37             |
| 2015-06-27  | Kent United Green G01        | 1 | Capital FC Timbers Black G01     | 2 | 2015 Capital Cup GU14           | 1.24             | 1.03             |
| 2015-06-26  | Thelo Storm G01              | 0 | Capital FC Timbers Black G01     | 0 | 2015 Capital Cup GU14           | 0.30             | 5.31             |
| 2015-06-26  | Capital FC Timbers Black G01 | 2 | Kidsport Willamette Strikers G01 | 3 | 2015 Capital Cup GU14           | 1.94             | 0.90             |